

SkyTruss® System

Foldable Modular Truss

exhibiting solutions



Unique Foldable Truss: SkyTruss® System

Build Big For Impact

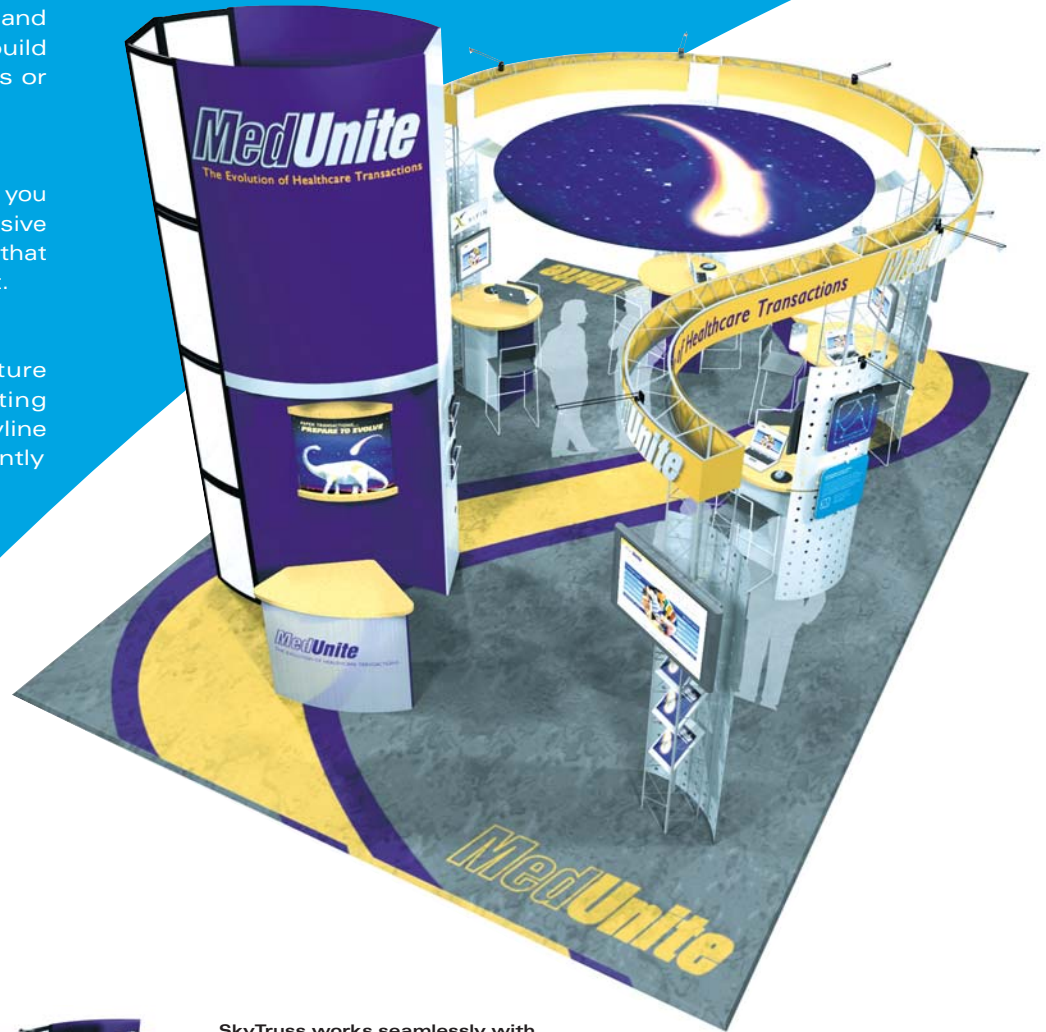
SkyTruss is extremely strong and weight-bearing so you can build big and load up with products or presentation equipment.

Powerful Fabric Graphics

Skyline Genuine Graphics get you noticed! SkyTruss carries massive fabric banners and ceilings that add impact, not bulk or weight.

Packs Small to Save Money

Get strength and structure without unrealistic operating costs. SkyTruss, like all Skyline products, packs down efficiently to maximize your event ROI.



SkyTruss works seamlessly with other Skyline systems to provide a complete exhibit solution.



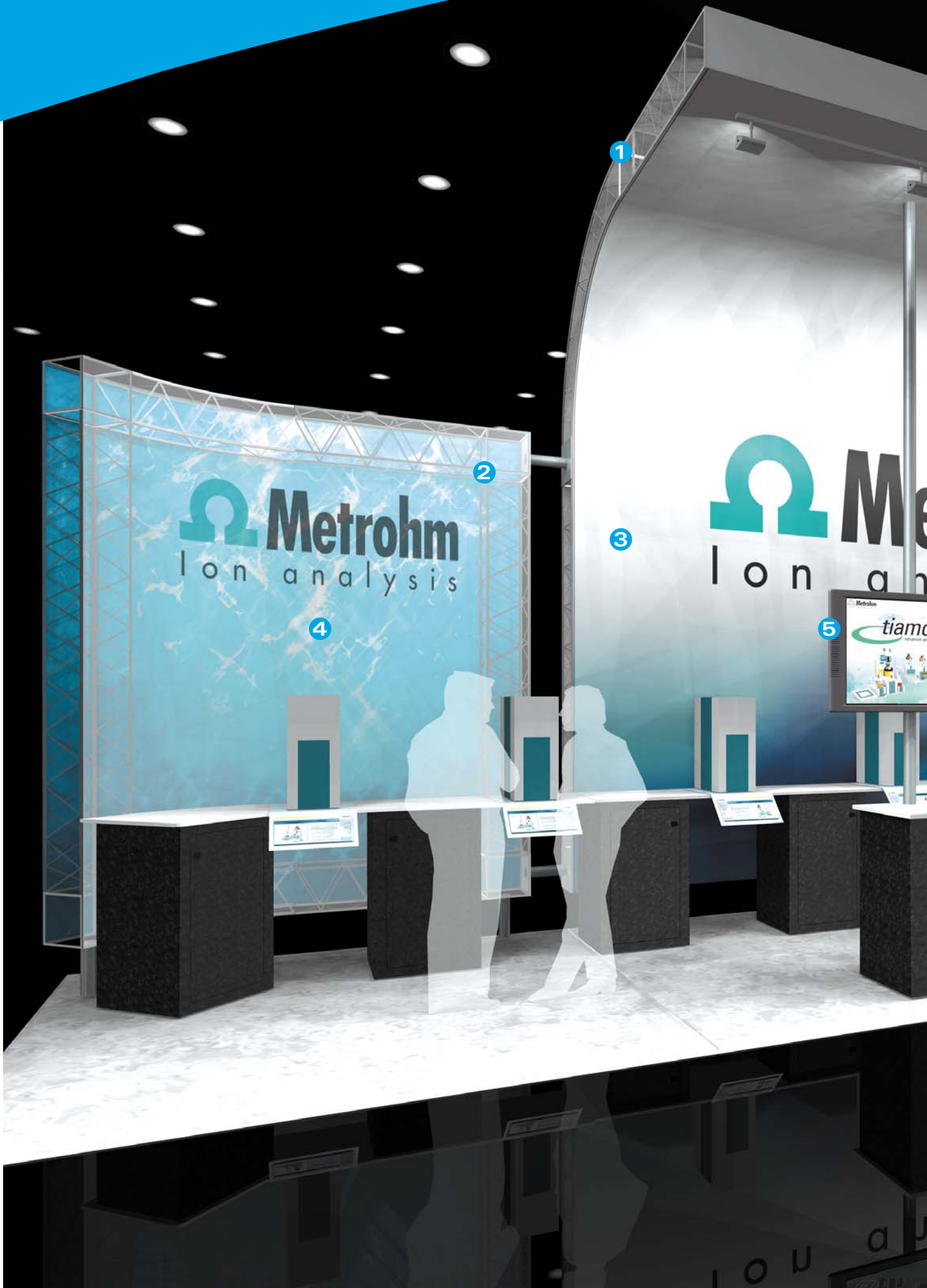
Modular exhibits efficiently reconfigure to fit smaller booth spaces, giving you flexibility.

Save on operating costs like shipping, drayage and storage! The island exhibit above fits in just five crates.

Gelin Abaci



SkyTruss provides structure for exhibits customized to fit your unique needs.



1

2

3

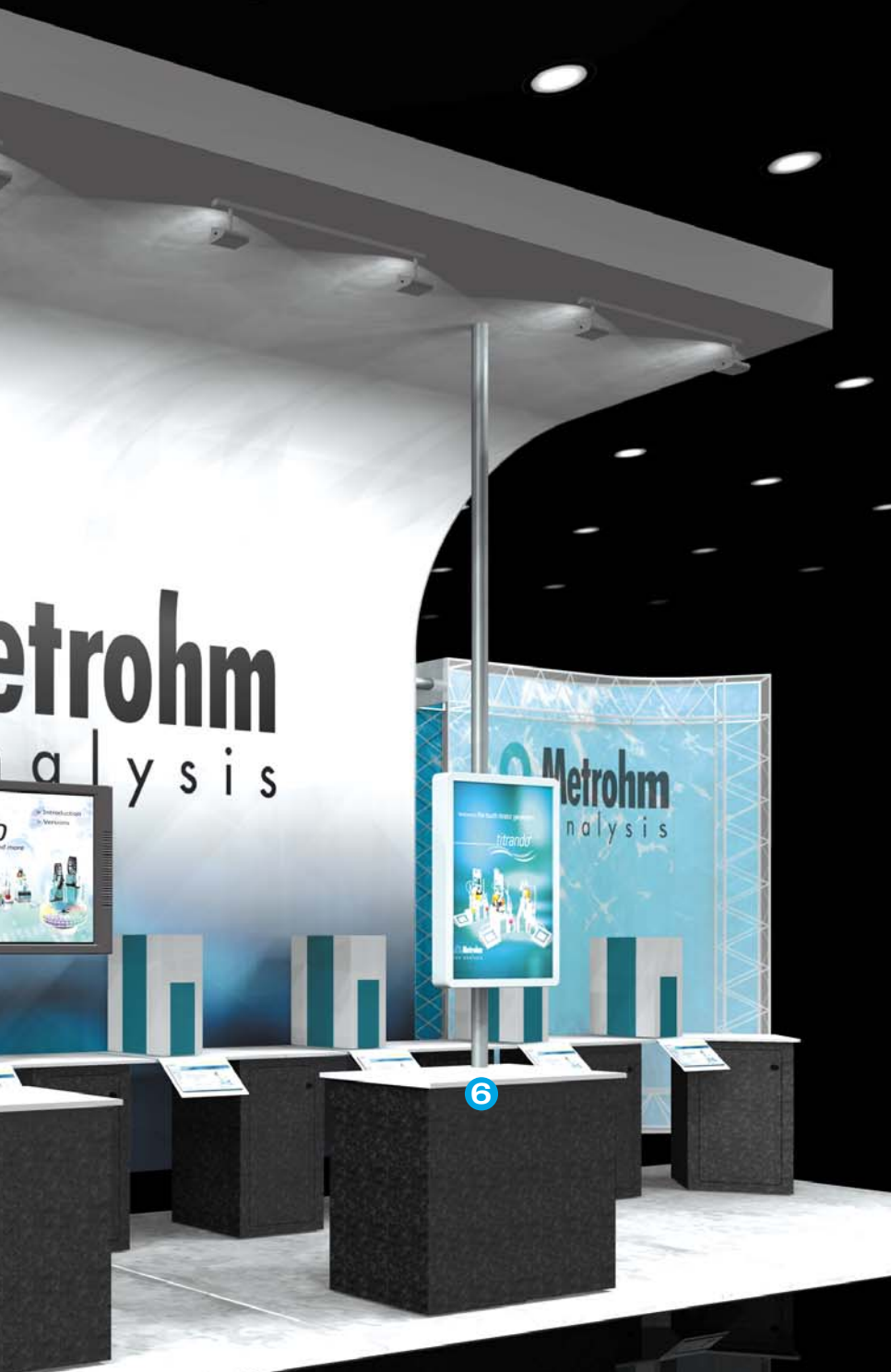
4

5

 **Metrohm**
Ion analysis

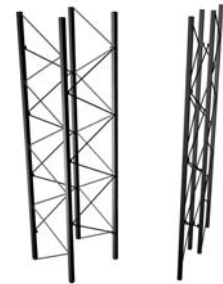
 **Me**
Ion an





1 Frame Folds Down

SkyTruss frame sections – even curves – fold nearly flat to save space and lower operating costs.



An 11 1/2" square section folds to just 1 3/8" deep.

2 Connector Cubes

Universal cubes connect SkyTruss sections and other Skyline systems to give you unlimited design possibilities and utmost functionality.

3 Fabric Graphics

Add impact and mass without adding weight! Lightweight fabric graphics are vibrant, durable and can be produced at any size.

4 Layered Graphics For Impact

Give your marketing message interest and depth by layering sheer and opaque fabric graphics.

5 Flat Screen Support

Engage and inform. Presentation kiosks feature flat screen support and integral wire management.

6 Counters/Workstations

Add work surface and valuable storage space. Counters are available with locking access doors and come in many finishes and colors to complement any exhibit.



SkyTruss allows you to create impactful environments of nearly any size and design.

Skyline SkyTruss® System



SkyTruss has flat surfaces to accommodate easy-to-install magnet-attached graphics.



Flat screen mounting brackets allow for presentations.



Integral counters provide workspace and demonstration areas.



SkyTruss is strong to support product or presentation equipment and works with other Skyline systems and accessories to achieve any look desired.

SkyTruss patent no. 6,149,021.

Skyline Exhibits
3355 Discovery Road
Eagan, Minnesota 55121

1-800-328-2725
1-651-234-6592 International

www.skyline.com

ISO 9001 Registered



ISO 9001:2001
FM69896